

THE

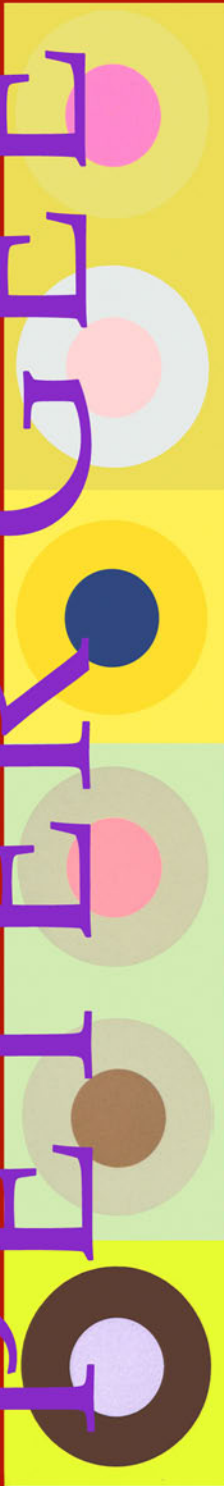
PETER GEE

COLLECTION



ARCHIVAL GICLEE PRINTS ON MUSEUM
GRADE SUMMERSET VELVET PAPER

PETER GEE



Target 01



Target 02



Target 13



Target 14



Target 03



Target 04



Target 15



Target 16



Petal 09



Petal 10



Petal 05



Petal 06



Petal 11



Petal 12



Petal 07



Petal 08



Petal 13



Petal 14



Petal 01



Petal 02



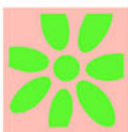
Petal 15



Petal 16



Petal 03



Petal 04



Target 09



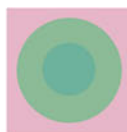
Target 10



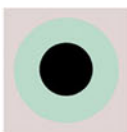
Target 05



Target 06



Target 11



Target 12



Target 07

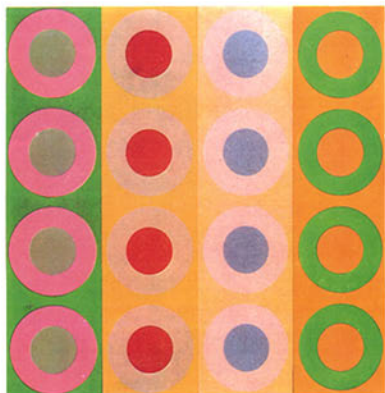


Target 08

Giclee Targets & Daisies 20" x 20"

PETER GEE Publicity

arts magazine
DECEMBER / JANUARY 1970 \$1.2



bauhaus: 50 years · peter gee · street works
dubuffet and the anticulture · stella · heizer

HOME DESIGN: THE NEW GARDE
How Young Designers Learn to Make Beauty Out of Chaos
By Wendy Goodman

NEW YORK
APRIL 11, 2004

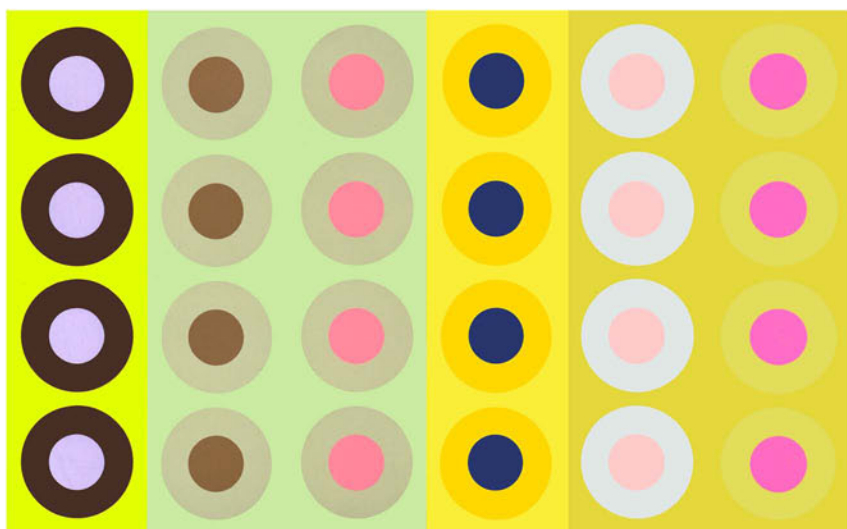


ARTS MAGAZINE 1970 NEW YORK MAGAZINE 2004

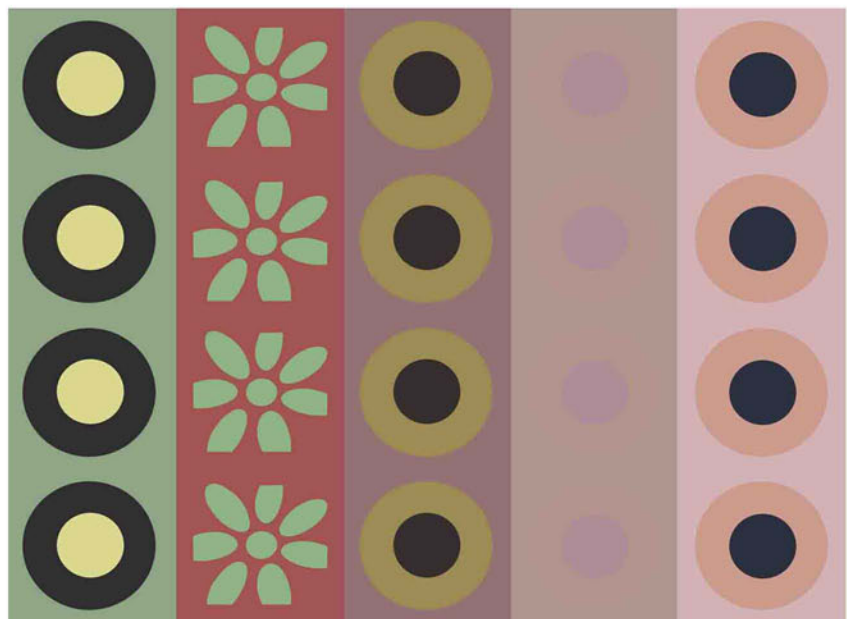


ELLE DECOR DOLCE & GABBANA

COLOR HITS OF THE 60'S



Target Strip 38"x46"



Target Daisy Strip 38"x46"

peter
gee



PETER GEE, artist, designer, restorationist and developer, was born in England in 1932. At eighteen he joined the army as a graphic designer, later attended The Martin School of Art in London. During the 1950's, he traveled to London and Paris exhibited his work in The Axion Gallery and The Denise Rene Gallery, respectively. Peter Gee arrived in New York City in 1962 and almost immediately enjoyed a prominent place in the Pop Art Era. He designed posters and silk screen prints for such clients as The Chase Manhattan Bank, Merrill Lynch, Pace Graphics and IBM.

In the fashion world, he designed packaging and posters for "Paraphernalia," where he met and became a long-time friend of Betsy Johnson. His Posters and prints of this period were exhibited next to those of Andy Warhol and Robert Indiana at the "Word and Image" show in the Museum of Modern Art. Gee's art was even featured on the cover of Time magazine several times during the 1960's and 1970's. During this time period, Gee also taught color workshops at The School of Visual Art, The Rhode Island School of Design, and Harvard University.

IMAGINARY STILL LIFE



Red Poppy Blue Cabinet 36"x48"



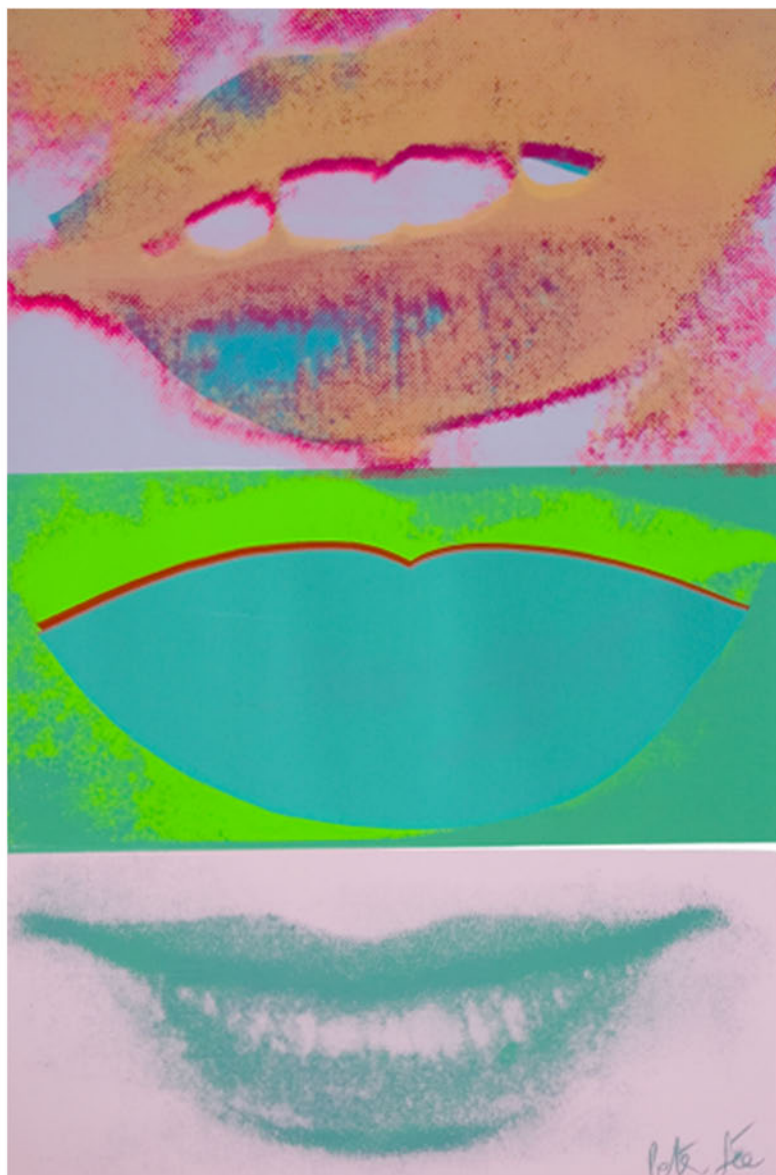
Velvet Nude 24"x28"



Dotted Vase 38"x46"

LIPS

circa 1960



Available as Giclee Prints 38"x 50"
and One-of-a-Kind Silk Screen Prints

www.petergee.com

PETER GEE

The Gee family is proud to present archival museum quality giclee prints of the original work of renowned artist Peter Gee.

Gee's work is in the permanent collection of THE MUSEUM OF MODERN ART IN NEW YORK THE MUSEUM OF MODERN ART IN KYOTO, THE SMTHSONION AND THE VICTORIA AND ALBERT MUSEUM IN LONDON

Please visit Peter Gee's Web Site:
www.petergee.com



Represented by Odin Opsahl-Gee

For pricing & availability contact Odin

(646)706.3615 Odin@petergee.com

The ApoGee Gallery, Jamaica Nantucket Cape cod